

# EWHA SPOTLIGHT



OFFICE OF  
INTERNATIONAL  
AFFAIRS

Publisher | Ihn-hwi Park  
Editor | Ihn-hwi Park

+82-2-3277-3158  
http://oia.ewha.ac.kr  
oia@ewha.ac.kr

BIANNUAL E-NEWSLETTER OF THE OFFICE OF INTERNATIONAL AFFAIRS, EWHA WOMANS UNIVERSITY



## 2016 STUDY ABROAD FAIR

➡ The Ewha Office of International Affairs(OIA) held the 2016 Fall Study Abroad Fair on November 4, 2016. Student representatives consisting of 95 international exchange/visiting students from 91 universities and 19 countries and 38 Ewha students participated by hosting a table for each country. Students shared information on each other's universities and countries and one-on-one consulting sessions were also available at the OIA section.



## ROBERT GIBBS: THE FUTURE OF WOMEN AND UNIVERSITY EDUCATION

➡ The Ewha Institute for the Humanities held the 16th Kim Okgil Memorial Lecture on November 17, 2016. Robert Gibbs, Professor of Philosophy at the University of Toronto and first Director of the Jackman Humanities Institute, was invited to speak on "The Future of Women and University Education", the new identity of universities that are being put at risk due to rapid social changes and the role of women in various educational settings.

## SEOUL PEACE PRIZE RECIPIENT DENIS MUKWEGE AT EWHA

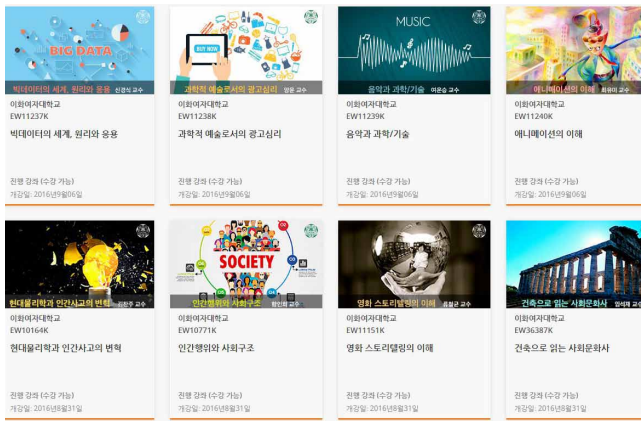
➡ The winner of the 13th Seoul Peace Prize, Denis Mukwege, head of Panzi Hospital in the Democratic Republic of Congo, visited Ewha Womans University Medical Center on October 8, 2016. A gynecologist and activist for women's rights in Congo, Dr. Denis Mukwege has made great contributions in promoting peace in the international community and has shown immense dedication for treating 48,482 victims of wartime sexual violence.



## 2016 EWHA CHRISTMAS CHAPEL

➡ The 2016 Ewha Christmas Chapel was held at the Welch-Ryang Auditorium on December 1, 2016. Students, faculty members, and alumnae gathered together to celebrate Christmas in advance. After the chapel, attendees shared a meaningful moment of writing Christmas cards to 10 children sponsored by Compassion Korea, whom the Ewha Chapel has been sponsoring since 2009.





**EWHA OPENS NEW K-MOOC COURSES**

Ewha Womans University is currently offering a total of eight K-MOOC courses, including the four newly added courses recently. Since October 2015, ten universities in Korea including Ewha have been participating in the K-MOOC service, the Korean model for the Massive Open Online Course (MOOC) service, offering 27 online courses to the public for free. Ewha has been providing “Modern Physics and the Change of Human Thinking”, “Understanding of Cinematic Storytelling”, “Socio Cultural History Interpreted by Architecture” and “Human Action and Society Structure.” Starting from September 2016, four new courses have been added to the existing four lectures which are “The World of Big Data, Principle and Application”, “The Psychology of Advertising as a Scientific Art”, “Music and Scientific Technology, and “Understanding Animation.” Courses are available online at the K-MOOC website <http://www.kmooc.kr/>

**VIOLENCE PREVENTION EDUCATION PROGRAMS AT EWHA**



Ewha was selected as the “Outstanding Institution for Violence Prevention Education of 2016” and received an award at the Ceremony for the Elimination of Domestic and Sexual Violence Against Women held by the Ministry of Gender Equality and Family on November 25, 2016. Ewha has been making continuous endeavors in helping prevent and building each individual’s ability to cope with violence. Some of its major efforts include the policy of including faculty member’s participation in violence prevention education towards credits for faculty evaluation. Also, systematic and proactive education programs on violence prevention were conducted both online and offline. Jinhee Kim, a researcher at the Center for Gender Affairs, was also awarded an excellence prize in recognition of her contribution of successfully managing the violence prevention education programs on campus.

**DR. KWON RECEIVES LIFETIME ACHIEVEMENT AWARD BY THE AMERICAN SOCIETY FOR MICROBIOLOGY**



Kyung Ju Kwon (Biology Major, graduated in 1956), alumna of Ewha, was chosen as the first Asian female scholar to be awarded the ‘Lifetime Achievement Award’-the premier award for sustained contributions to the microbiological sciences-by the American Society for Microbiology. Dr. Kyung Ju Kwon, currently working at the National Institutes of Health (NIH) in the United States, will receive her award and deliver a special lecture at the award ceremony in June 2017 at New Orleans.

**EWHA, THE FIRST UNIVERSITY IN KOREA TO BE AWARDED GRANT FROM THE BILL & MELINDA GATES FOUNDATION FOR TWO CONSECUTIVE YEARS**

Professor Eun Mee Kim’s (Dean, Graduate School of International Studies & Institute for Development and Human Security) research team of Global Health Institute for Girls has been awarded a 40 million grant from the Bill & Melinda Gates Foundation for two consecutive years under the topic of “Korea Global Health Strategy”. Through the research project “Advocacy for Korean Engagement in Global Health and Development”, the team focused on girls’ health to decrease infants’ death rate and improve maternal health since 2013. And as a result, the Korean Government officially launched the “Better Life for Girls Initiative” to help provide quality education and strengthen health services in developing countries. The team plans to expand its scope of research from girls’ health to ‘comprehensive health’ of girls and discuss international health issues in developing countries.



## STUDENT ACTIVITIES



### EWHA CHAMBER CHOIR SUCCESSFULLY ENDS ITS U.S. TOUR

Ewha Chamber Choir, choir consisted of 23 Ewha students and graduates and led by Professor Shin-hwa Park (Voice Major), successfully ended their U.S. tour from August 3 to 15, 2016. The Choir's first performance with Professor MiJa Park (Voice Major) was held on August 4 at the Walt Disney Concert Hall in L.A. as a charity concert for the homeless in California. On the 5th and 7th, Ewha Chamber Choir and the Ewha Alumnae Choir of South California held a performance together at the Good Shepherd Church and Wilshire United Methodist Church. On the 11th, the choir moved to Vancouver, Canada and held performances at Vancouver Grace Korean Church, Armenian Nursing Center, and the Chandos Pattison Auditorium to introduce Ewha and warm the hearts of Korean Americans. In particular, the concert at the Chandos Pattison Auditorium was a joint charity concert with the Vancouver Zion Mission Choir and the funds raised from the performance were donated to children in Tanzania.



### MODEL UN CLIMATE CHANGE NEGOTIATION PROGRAM HELD BY EWHA'S ECOCREATIVE TEAM

Ewha EcoCreative, an interdisciplinary program to creatively apply knowledge in biological resources and ecology, carried out a project led by Professor Chang Kwon Chung and several graduate students. The purpose was to educate youngsters and inform people about the urgent state of the world environment and improve public awareness. The team held a Model UN Climate Change Negotiation Program at Seoul National University Middle School on October 11, 2016. This "World Climate" simulation which was developed by MIT and Climate Interactive has been performed worldwide and is the first time being introduced to teenagers in Korea. Students actively participated and suggested several alternatives to reduce greenhouse gases. Prof. Chung raised concerns that climate change due to greenhouse gas emissions will have a massive effect on the survival of future generations after 2050 and considered it critical for global citizens to realize the severity of the problem.



### 2016 KIMCHI MAKING EVENT

The Volunteer Team of the Office of Student Affairs held the Kimchi making event at the Student Cafeteria on November 24, 2016. As part of the "Beautiful World Made by Ewha" program annually organized by the University for 16 years since 2001, the Kimchi making, which marks its fifth year, was arranged to bring together the local community and practice the spirit of sharing. 100 Ewha students, 50 faculty members, and 10 volunteers from the Volunteer Center of Seodaemun-gu district participated in this event and made 3,500kg of Kimchi. Kimchi made by participants were delivered to 350 underprivileged households (10kg per household) including single-parents and grandparent-headed families, people with disability, beneficiaries of the National Basic Livelihood Security System, patients suffering from rare and intractable diseases, and the elderly living alone.



### STUDENT COUNSELING SERVICE MAEUM E CENTER NEWLY OPENS

Ewha Dormitory and the College of Social Sciences jointly opened the Maeum E Center, counseling center for students living on campus. The Maeum E Center is located at the E-House, the new dormitory which opened in 2016, in building 303. This new center is different from the existing Student Counseling Center run by the Office of Student Affairs as it only offers its service to the 4,000 students living in dormitories. The Maeum E Center will allow students to receive the right treatment at the right timing on troubling matters related to studies, career, relationship, family issues and others. Furthermore, the center will not only provide counseling services but also connect students in need of psychotherapy or education for mental health to relevant facilities both inside and outside of Ewha.

## STUDENT ACTIVITIES



### WRITING COMPETITION HELD FOR YOUNGSTERS FROM MULTICULTURAL FAMILIES

In celebration of Hangeul(Korean Alphabet) Day, Ewha's Department of Korean Language Education held "The 9th Ewha Rainbow Youth Writing Competition" on October 8, 2016. It was all the more special as it was the very first writing competition for multicultural students only. Under the theme of "The Color of My Special Memory" and with the attendance of 60 faculty members and undergraduates from the Department of Korean Language Education participating as assistant teachers, they helped young students communicate and express their thoughts through writing. Participants said that the competition was a special experience for them as they were able to share ideas and meet with their peers from various backgrounds.



### KOREAN LANGUAGE CAMP ON CAMPUS FOR NORTH KOREAN DEFECTORS

The Department of Korean Language Education held "Learning through Conversation-Korean Language Camp" under the theme of Korean culture in August, 2016. Eight Ewha students from the Department of Korean Language Education and English Education also participated in this camp which was hosted for the students of Yeomyung School, an alternative school for young North Korean defectors. Before the main event, Ewha students have conducted regular study sessions, planning meetings, and pre-mentoring sessions with the students of Yeomyung School on a weekly basis to come up with effective educational methods. Focusing on the fact that young North Korean defectors had difficulty adapting to the South Korean culture and using the South Korean language, this camp was designed to help them blend into the culture and become familiar with the language as well.



### EWHA STUDENTS RECEIVE 2016 BLAISE PASCAL SCHOLARSHIP

Ewha graduates, Serin Kang (Chemistry and Nano Science), Jihye Choi (Chemistry and Nano Science), Jungmin Cho (French Language and Literature), Hyunjung Kang (French Language and Literature) have been proudly chosen as recipients of the 2016 Blaise Pascal Scholarship, a French governmental scholarship. The four recipients will continue their academic achievement at HEC Paris, Grenoble Graduate School of Business (Paris campus) and Ecole Polytechnique, Université d'Orléans in France.



### SOPHIE BOWMAN WINS THE BEST PAPER AWARD FROM THE 8TH WORLD CONGRESS OF KOREAN STUDIES

Sophie Bowman, enrolled in the master's program for Korean Language and Literature at Ewha, won the Best Paper Award given to promising scholars in the field of Korean studies at 'The 8th World Congress of Korean Studies' held at the University of Pennsylvania from October 5 to 7, 2016. Her paper, entitled "The Quest for Female Subjectivity in a Pile of Boxes" examines the history and symbolism of apartments in Korea by analyzing the meaning of apartments that appear in Korean novels written by female writers.



### RESEARCH ON EAGLE OWL CERTIFIED AS AN ENVIRONMENTAL EDUCATION PROGRAM

Da-mi Jeong, a student enrolled in the Interdisciplinary Program of EcoCreative, a graduate course at Ewha, received a certificate from the environmental education program organized by the Ministry of Environment. Her program "What do eagle owls eat?" is designed to help people understand the habitat of eagle owls and encourage people to show continuous interest in the preservation of the natural environment.





### **THE PUBLIC DIPLOMATIC CENTER HOLDS THE 15TH KOREA-GERMANY FORUM**

The Public Diplomatic Center held the 15th Korea-Germany Forum in Kyeongju from October 12 to 15, 2016, with the support of the Korea Foundation. Korea-Germany Forum is a private organization in which Korean and German notable individuals in the fields of politics, economy, society and culture participate. It has been held every year in one of the two countries starting from 2002. 70 people from Korea and Germany participated in the forum. This year's theme was "Culture" and some of the topics were: "Issues on Politics, Economy, and Society of the Two Countries", "Digital Economy: Industry 4.0 and Smart Factory", "Future-oriented Status and Role of the Two Countries in Each Region's Culture", "Restoration, Preservation and Succession of Traditional Cultural Heritage After Reunification." The results of the presentation and discussions will also be proposed to President Park and Prime Minister Merkel.

### **HANS MODROW DELIVERS SPECIAL LECTURE ON REUNIFICATION AT EWHA**

Hans Modrow (88), the last Communist premier of the German Democratic Republic (GDR), visited Ewha on September 21, 2016, and delivered a special lecture "The State of Affairs during German Reunification and Subsequent Circumstances" hosted by Ewha Institute of Unification Studies. He was the last premier of East Germany when the Communist Party (Socialist Unity Party) was a governing party of GDR, and after the German reunification, he served as a member of the European Parliament and of the Bundestag. He is one of the best-known German politicians and currently is the honorary Chairman of the Left Party. During his visit, Hans Modrow shared his experiences over German reunification and discussed unification of the Korean Peninsula with Ewha students. The former prime minister explained in detail the German reunification process, its consequences and gave advice on how the two Koreas can achieve peaceful unification.







### EWHA, THE FIRST KOREAN UNIVERSITY RE-ACCREDITED BY FERCAP

The Ewha Institutional Review Board earned a reaccreditation from the SIDCER (Strategic Initiative for Developing Capacity in Ethical Review) - FERCAP (Forum for Ethical Review Committees in the Asia and Western Pacific Region) at the 16th FERCAP international conference held from November 20 to 23, 2016. SIDCER-FERCAP evaluates ethical review practices through a recognition program, and Ewha became the first reaccredited university in Korea for its high standards in research. The Institutional Review Board plans to continuously play an exemplary role in performing ethical research by systematically reviewing the ethical factors of research conducted at Ewha through independent and standardized criteria.

### PARTNERSHIP WITH HARVARD COLLEGE IN ASIA PROGRAM (HCAP) FOR TEN CONSECUTIVE YEARS

Ewha has been selected for 10 consecutive years as a partner of Harvard College in Asia Program (HCAP), which provides academic and cultural exchange between Ewha and Harvard University. HCAP was founded in 2003 at Harvard to foster leaders with mutual deep understanding of the U.S. and Asia. Every year, seven or eight prestigious schools in major Asian countries are selected as partners for this program. In Korea, Ewha is the only university that has participated in the program since 2007 and has grown to be one of the most popular global programs among Ewha students. As part of 2016-2017 Ewha-HCAP, 16 delegates from Ewha participated in the first Boston conference organized by Harvard from January 15 to 22, 2016. From March 11 to 19, 2017, the second conference organized by Ewha will be held in Seoul on the theme of "Mind, Body, and Society: Global Health Challenges of the 21st century."







**NEW PARTNERSHIP WITH GRENOBLE ECOLE DE MANAGEMENT**

Ewha School of Business signed an MOU with Grenoble Ecole de Management and Osong Medical Innovation Foundation on October 26, 2016. Grenoble Ecole de Management is a triple accredited business school(AACSB, AMBA, EQUIS) located in Grenoble also known as the Silicon Valley of France, and Osong Medical Innovation Foundation was established to promote the vitalization of medical R&D and commercialization of research results. Through this agreement, Ewha School of Business plans to form innovative collaborations for its Healthcare MBA and Techno MBA, while fostering university-industry collaborations with the Osong Medical Innovation Foundation.

**KOREA CENTER FOR MERIDIAN 180 AT EWHA COHOSTS AN INTERNATIONAL SEMINAR WITH CORNELL UNIVERSITY AND UNIVERSITY OF TOKYO**



The Korea Center for Meridian 180 at Ewha cohosted “Developing Proposals for Risk Mitigation in the Asia-Pacific Region: A Global Summit” in Okinawa, Japan, with Cornell University and University of Tokyo from July 8 to 10, 2016. Meridian 180 is a global community of intellectuals which focuses on the Pacific Rim region, and was founded in 2012 at Cornell University for the purpose of opening new perspectives on issues of the Asia-Pacific region. Since then, Meridian 180 has done various activities such as hosting conferences and organizing expert groups. As partners in the Asian region, Ewha and University of Tokyo have actively been operating each center for Meridian 180 in Korea and Japan, respectively. In this international conference, about 60 scholars, experts, staff, NGO leaders, and policymakers from Korea, Japan, the U.S., Australia, China and Belgium developed new insights and approaches on various future crises in the Asia-Pacific region.

